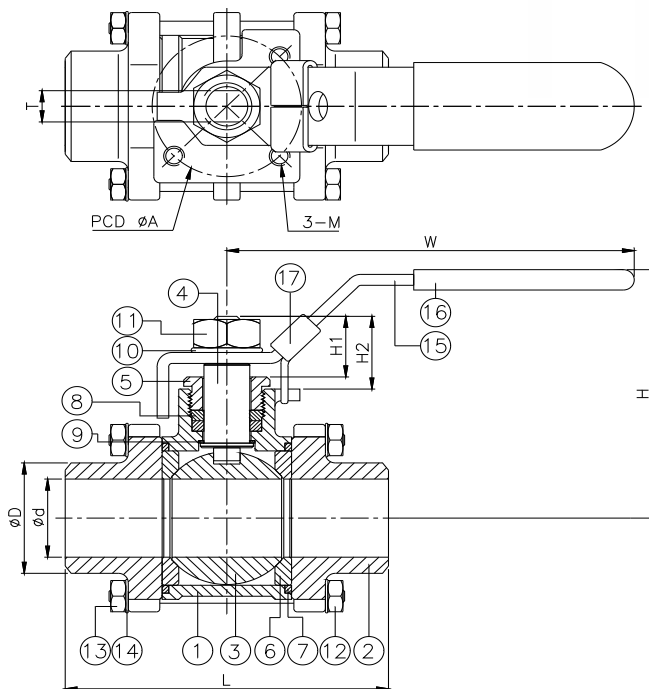




## FEATURES

- Full port, 1/4"~4" (DN8~DN100)
- W.P. : 1000 WOG (PN63)
- W.T. : -20°C~200°C (-4°F~392°F)
- Investment casting
- Blow-out proof stem
- Anti-static device (option)
- Locking device
- ISO 5211 Mounting pad
- Butt weld ends conform to ANSI B16.25 & DIN 3239 part1



ITEM	PARTS	MATERIAL	
1	BODY	ASTM A351-CF8M	ASTM A216-WCB
2	CAP		
3	BALL	ASTM A351-CF8M	
4	STEM	ASTM A276-316	
5	GLAND NUT	AISI 304	
6	SEAT	PTFE	
7	SEAL		
8	PACKING		
9	THRUST WASHER		
10	SPRING WASHER	AISI 304	
11	STEM NUT		
12	BOLT		
13	BOLT NUT		
14	SPRING WASHER	PVC	
15	HANDLE		
16	HANDLE SLEEVE	AISI 304	
17	LOCKING DEVICE	AISI 304	

DN	d	D	L	W	H	H 1	H 2	T	A	M	Torque (N-m)	Wall Thickness
8	11.5	17.5	64.5	117	57	11	15	5	36	M 5	4	2.7
10	12.7	17.5	65.5	117	57	11	15	5	36	M 5	4	2.7
15	15	22	66	117	57	11	15	5	36	M 5	4	2.7
20	20	27	83	137	60	14	19.5	6.5	36	M 5	7	3
25	25	34	95	157	80	15.5	23.5	8	42	M 5	7.5	3
32	32	42.5	111	157	85	15.5	20	8	50	M 6	11	4
40	38	48.5	131	195	95	18	26	9	50	M 6	17	4
50	50	61	151	200	110	18	26	9	70	M 8	45	5
65	65	73	186	285	135	31	40	12	102	M 12	59	5.8
80	80	92	212	285	148	31	38	12	102	M 12	90	6.8
100	100	115	235	315	170	40	53	16	102	M 12	160	7.8

unit:mm

NPS	d	D	L	W	H	H 1	H 2	T	A	M	Torque (in-lb)	Wall Thickness
1/4"	0.45	0.69	2.54	4.61	2.24	0.43	0.59	0.2	1.42	M 5	35	0.11
3/8"	0.5	0.69	2.58	4.61	2.24	0.43	0.59	0.2	1.42	M 5	35	0.11
1/2"	0.59	0.87	2.6	4.61	2.24	0.43	0.59	0.2	1.42	M 5	35	0.11
3/4"	0.79	1.06	3.27	5.39	2.36	0.55	0.77	0.26	1.42	M 5	62	0.12
1"	0.98	1.34	3.74	6.18	3.15	0.61	0.93	0.31	1.65	M 5	66	0.12
1-1/4"	1.26	1.67	4.37	6.18	3.35	0.61	0.79	0.31	1.97	M 6	97	0.16
1-1/2"	1.5	1.91	5.16	7.68	3.74	0.71	1.02	0.35	1.97	M 6	150	0.16
2"	1.97	2.4	5.94	7.87	4.33	0.71	1.02	0.35	2.76	M 8	398	0.2
2-1/2"	2.56	2.87	7.32	11.22	5.31	1.22	1.57	0.47	4.02	M 12	522	0.23
3"	3.15	3.62	8.35	11.22	5.83	1.22	1.5	0.47	4.02	M 12	797	0.27
4"	3.94	4.53	9.25	12.4	6.69	1.57	2.09	0.63	4.02	M 12	1416	0.31

unit:in



8F., No.201, Sec. 2, Tiding Blvd., Neihu District, Taipei City 114, Taiwan R.O.C.

TEL: +886-2-26585800

FAX: +886-2-26582266 / 27997766