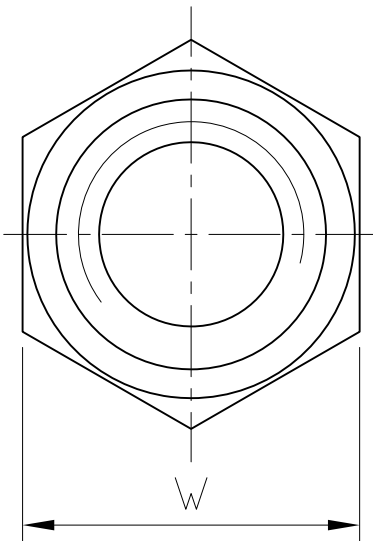
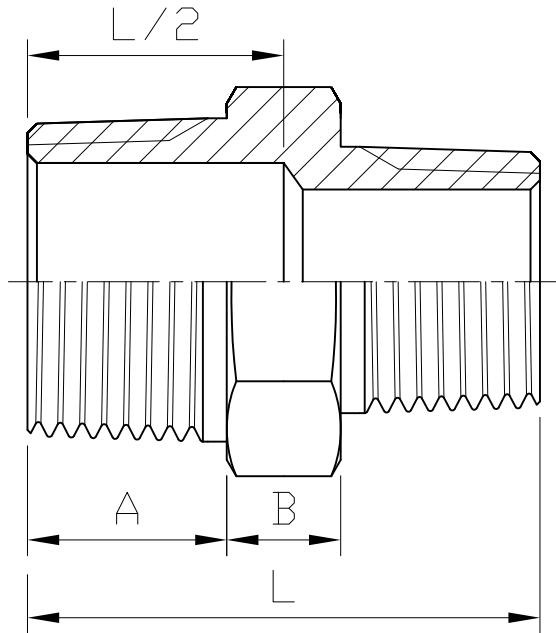


# REDUCING NIPPLE



$1/4'' \sim 2''$  Hexagon  
 $2-1/2'' \sim 4''$  Octagon

SIZE		A		B		L		W	
		mm	in	mm	in	mm	in	mm	in
1/4"	1/8"	12	0.47	6	0.24	29	1.14	15.1	0.59
	3/8"	13	0.51	7	0.28	31	1.22	18.6	0.73
3/8"	1/4"	13	0.51	7	0.28	32	1.26	18.6	0.73
	1/2"	16	0.63	7	0.28	34	1.34	23	0.91
1/2"	1/4"	16	0.63	7	0.28	35	1.38	23	0.91
	3/8"	16	0.63	7	0.28	36	1.42	23	0.91
3/4"	1/8"	16	0.63	7	0.28	34	1.34	28.5	1.12
	1/4"	16	0.63	7	0.28	35	1.38	28.5	1.12
	3/8"	16	0.63	7	0.28	36	1.42	28.5	1.12
	1/2"	16	0.63	7	0.28	39	1.54	28.5	1.12
1"	1/4"	20	0.79	9	0.35	41	1.61	35.4	1.39
	3/8"	20	0.79	9	0.35	42	1.65	35.4	1.39
	1/2"	20	0.79	9	0.35	45	1.77	35.4	1.39
	3/4"	20	0.79	9	0.35	45	1.77	35.4	1.39
1-1/4"	1/4"	20	0.79	10	0.39	42	1.65	45	1.77
	3/8"	20	0.79	10	0.39	43	1.69	45	1.77
	1/2"	20	0.79	10	0.39	46	1.81	45	1.77
	3/4"	20	0.79	10	0.39	46	1.81	45	1.77
1"	1/4"	20	0.79	10	0.39	50	1.97	45	1.77
	1/4"	20	0.79	10.5	0.41	42.5	1.67	51	2.01
	3/8"	20	0.79	10.5	0.41	43.5	1.71	51	2.01
	1/2"	20	0.79	10.5	0.41	46.5	1.83	51	2.01
1-1/2"	3/4"	20	0.79	10.5	0.41	46.5	1.83	51	2.01
	1"	20	0.79	10.5	0.41	50.5	1.99	51	2.01
	1-1/4"	20	0.79	10.5	0.41	50.5	1.99	51	2.01
	3/8"	21	0.83	11	0.43	45	1.77	61.5	2.42
2"	1/2"	21	0.83	11	0.43	48	1.89	61.5	2.42
	3/4"	21	0.83	11	0.43	48	1.89	61.5	2.42
	1"	21	0.83	11	0.43	52	2.05	61.5	2.42
	1-1/4"	21	0.83	11	0.43	52	2.05	61.5	2.42
2-1/2"	1-1/2"	21	0.83	11	0.43	52	2.05	61.5	2.42
	3/4"	23.5	0.93	13	0.51	52.5	2.07	78.5	3.09
	1"	23.5	0.93	13	0.51	56.5	2.22	78.5	3.09
	1-1/4"	23.5	0.93	13	0.51	56.5	2.22	78.5	3.09
3"	1-1/2"	23.5	0.93	13	0.51	56.5	2.22	78.5	3.09
	2"	23.5	0.93	13	0.51	57.5	2.26	78.5	3.09
	1-1/2"	26	1.02	15	0.59	61	2.4	92	3.62
	2"	26	1.02	15	0.59	62	2.44	92	3.62
4"	2-1/2"	26	1.02	15	0.59	64.5	2.54	92	3.62
	2"	28	1.1	15	0.59	64	2.52	118	4.65
	2-1/2"	28	1.1	15	0.59	66.5	2.62	118	4.65
4"	3"	28	1.1	15	0.59	69	2.72	118	4.65

Tolerance:  $\pm 0.5\text{mm}$  ( $1/8'' \sim 2''$ )  
 $\pm 0.8\text{mm}$  ( $2-1/2'' \sim 4''$ )

Ra	0.2	▽▽▽▽
1.6	▽▽	▽▽
6.3	▽	▽
25	▽	▽
0.1	±0.1	
0.2	±0.2	
0.3	±0.3	
0.5	±0.5	
0.8	±0.8	
1.0	±1.0	
1.5	±1.5	
2.0	±2.0	
3.0	±3.0	
4.0	±4.0	
5.0	±5.0	
6.3	±6.3	
8.0	±8.0	
10	±10	
15	±15	
20	±20	
25	±25	
31.5	±31.5	
40	±40	
50	±50	
63	±63	
80	±80	
100	±100	

HAITIMA CORPORATION  
 P.O. BOX 34-36 TAIPEI  
 Tel: +886-2-26585800  
 E-mail: haitima@seednet.tw  
 TAIWAN R.O.C. www.haitima.com.tw  
 Fax: +886-2-26582266



**HAITIMA CORPORATION**  
 Ball Valves & Pipe Fittings

CHECK BY	DRAWING BY	DATE	SPECIFICATION	Reducing Nipple
	<i>Dune</i>	Mar.05.2009	MATERIAL	304/316
			PROCESS/Nr.	
			UNIT / SCALE	mm

△			
△			
△			
Revise	Description	Date	Approve
DRAWING NO. <b>F07</b>		<b>-09</b>	